

**SHIBUYA**

# **BLU-DRILL** *SERIES*

Product Brochure

- Diamond Core Drilling Machines
- Optional Accessories
- Diamond Core Bits





SHIBUYA

“Simplicity  
is the ultimate  
Sophistication.”

Leonardo da Vinci

# **BLU-DRILL** *SERIES*

Product Image



# COMPANY

**SHIBUYA**

## ABOUT US:

The unique feature of SHIBUYA Company is its in-house researching, designing, producing, and promoting of both diamond tools and diamond tool machines. This integrated in-house system has enabled the company to optimize the overall improvement in activities which furthermore leads to specializing in the field and meeting with clients' needs and expectations.

Since 1969, we have accumulated the know-how of cutting concrete, steel rebar, stones, and other building materials to share with our clients worldwide. Solutions that can make clients' jobs done safer, easier, faster and better.

Currently, SHIBUYA Diamond Core Drilling Machines and Diamond Tools are used in more than 30 countries.  
We will keep updating the industry-worldwide standard.

SHIBUYA R&D TEAM ROOM



SHIBUYA HIROSHIMA FACTORY

# NETWORK

**SHIBUYA**

The American Continent:  
DITEQ Corporation  
9876 Palumm Rd, Lenexa, KS. 66215  
[www.diteq.com](http://www.diteq.com)

New Zealand:  
OML Diamond  
48 Waverley Road  
RD 3, Napier 4183  
[www.omldiamond.com](http://www.omldiamond.com)

Australia:  
DITEQ  
3/50 Kremzow Road, Brendale  
QLD 4500

Russia:  
Prof Tekh Instrument LLC  
123007, Russia, Moscow,  
Str. Shenogina 4k1  
[www.tool-pro.ru](http://www.tool-pro.ru)  
<https://shibuya-russia.ru/>

Ukraine:  
Pipe Tools LLC  
04080, Osipovskogo Str. 9, Kyiv  
<https://ptl.com.ua>

Israel:  
Syrox Israel Ltd  
Hasatat St. No 9, Einav Industrial Park  
Modiin, 7178107

U.A.E.:  
Diamond Cutting Tools Trading Co. LLC  
Shop No. 9, Mubarak Building, Karama,  
Dubai

Kingdom of Saudi Arabia:  
Saeed Mohamed Busuliman Est. for  
Trading  
Building No. 3118  
Omar Al-Mokhtar Street (Rail St.)  
Unit No.6, AR Riyadh, 12644-7496  
<http://smbasulimanest.com>

Gulf Diameter Est. for Trading  
P.O.Box 1820, Dammam, 31441  
[www.gulfdiameter.com](http://www.gulfdiameter.com)

South Africa:  
Diamond Products  
Unit 14, Northlake Industrial Park  
Malcolm Moodie Crescent, Jet Park  
[www.diamondpc.co.za](http://www.diamondpc.co.za)

Hong Kong:  
Enco Limited  
C3 1/F, Lucky Horse Industrial Bldg.  
64 Tong Mi Road, Kowloon  
<http://enco-ltd.com>

Taiwan:  
Yih Sui Metals & Tools Corp.  
The 1Fl., No.17, Ln.143, Chengte Rd.  
Sec. 3, Taipei

Singapore:  
Teesin Machinery (Pte) Ltd  
11 Senoko Avenue  
758301  
[www.teesin.com.sg](http://www.teesin.com.sg)

Diamond and Tools Pte Ltd  
44 Woodlands Sector 2  
Woodlands Connection  
Singapore 737694  
[www.diamond-and-tools.com](http://www.diamond-and-tools.com)

Malaysia:  
Coolman Malaysia Sdn Bhd  
A-G-2A, Pusat Perdagangan Bukit  
Serdang, Jalan Bs 14/1, Seksyen 14  
Taman Bukit Serdang, 43300  
Seri Kembangan, Selangor Darul Ehsan  
[www.shibuyamalaysia.com](http://www.shibuyamalaysia.com)

South Korea:  
Kwang Duck Construction Company  
30, 1F, Dogmag-ro, 40-Gil,  
Mapo-Gu, Seoul  
[www.kdbestway.com](http://www.kdbestway.com)  
<https://kwangduc.modoo.at/>

Thailand:  
Thai Seng Trading Co., Ltd.  
122/31 Moo 6, Tambon Bangphiang,  
Amphur Bangbo, Samutprakarn  
10560  
[www.thaiseng.co.jp](http://www.thaiseng.co.jp)

Indonesia:  
Pt. Sarana Jaya Nusasentosa  
Jl. Kh. Zainul Arfin No.13C,  
Jakarta - Pusat 10130  
<http://www.sjyns.com>

Vietnam:  
HHK ASIA CO, LTD  
No. 29/4B, Tran Thai Tong Street, Ward 15,  
Tan Binh District, Ho Chi Minh City  
TEL: +84 908141193

India:  
INDUSTRADE  
892, Bhandarkar Road Deccan Gymkhana  
Pune 411004, Maharashtra  
[www.industradeindia.com](http://www.industradeindia.com)

Philippine:  
Siccion Marketing, Inc.  
2nd floor CBS Bldg.  
1800 A Mendoza St., Sampaloc  
Manila 1008  
[www.smi-group.com.ph](http://www.smi-group.com.ph)

Lycore Builders And Supplies  
Corporation  
147C Congressional Avenue  
Brgy. Bahay Toro, Quezon City 1106

Bangladesh:  
Diamond Project B.D  
Hira Tower 5th Floor (South)  
1111/A, Ring Road  
Adabor, Dhaka-1207  
<https://diamond-project.com>

The United Kingdom:  
Dymatec Ltd  
Units 11-14 Cemetery Road  
Houghton Regis, Bedfordshire  
LU5 5BZ  
[www.dymatecuk.com](http://www.dymatecuk.com)

Diaquip  
Unit 1, Whitefield Road Ind. Est,  
Bredbury, Stockport SK6 2QR.  
<https://diaquip.co.uk/>

Giles Engineering (Uk) Ltd  
Unit 6 Cathcart Court, 50 Cathcart Road  
Rutherglen, South Lanarkshire  
G73 2RA, Scotland  
<https://www.gilesenengineering.co.uk>

Poland:  
Beton Technik  
Ul.28 Czerwca 56r. Nr.159/1,  
61-505 Poznan  
[www.beton-technik.pl](http://www.beton-technik.pl)

Greece:  
Sarris Machinery SA  
Papagianni Skoula and Iraki  
71305 Heraklion Crete  
<https://sarris-machinery.gr>

Denmark, Foroe Island, and Greenland:  
J.D. Diamond Tools A/S  
Glentevej 33, DK-4600, Koge  
[www.jd-diamant.dk](http://www.jd-diamant.dk)

Finland:  
Levanto Oy  
Venevalkamantie 5, FI-02700 Kauniainen  
[www.levanto.fi](http://www.levanto.fi)

Norway:  
Sverre Hellum & Sonn As  
Lindeberg Naeringsvei 28, 1067 Oslo  
Karls XV gate 19, Sjøenteret Vallo  
3150 Tolvsrød  
<https://www.hellumdiamant.no/>

France:  
Peuvrel Outils Diamantes (SAS)  
35 Rue La Maison-Neuve, 35270  
Bonnamain  
[www.peuvrel.com](http://www.peuvrel.com)

Romania:  
Antrepriza Contracton Srl  
Str. Frumusani, Nr. 12, Bl. 100  
AP 63, Sector 4, Bucuresti, 041966  
<http://www.shibuya.ro>

Lithuania:  
Monteza UAB  
Kareivių 2A, LT-08221 Vilnius  
Lithuania  
<http://www.monteza.lt>

Iceland:  
Diapro EHF  
Buggdúfjót 17A, Mosfellsbær 270  
<https://www.diapro.is>

Ireland:  
Concrete Care  
Staybarr House, Kylemore Park North  
Dublin 10 D10 WF50  
<https://concretecare.ie>

Hatsukaichi

Hiroshima

Japan

SHIBUYA COMPANY

WE ARE LOOKING FOR

# DISTRIBUTORS WORLDWIDE



## CONCEPT

- High durability with light weight
- High power from small-sized motor
- Less noise with high cooling capacity



The demands from clients have often contradicted engineering possibilities.

However, once the targets became clear, SHIBUYA has made every effort to knuckle down and achieve them. We overcome difficulties without any compromise.

Utilizing advanced molding technology, pressurized die-casting and plastic injection, external parts' weight have been reduced. To reduce weight inside the gearbox, holes are drilled in every possible gear, the slip discs for the clutch are relocated to the recess of a gear and the hollow spindle shaft was adopted. These weight reductions were achieved without sacrificing durability. 40 years of experience making diamond core drilling machines enable us to achieve this.

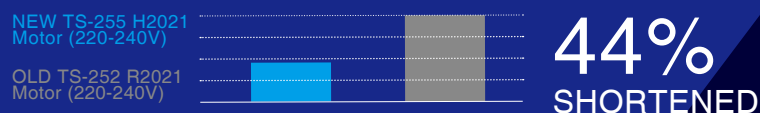
## THE NEW FEATURES (220-240 V Models Only)

While maintaining the basic performance of the past, the power has been improved dramatically. Thus, the operating time was shortened as much as 44%.

### Rated Power Comparison



### Cutting Time Comparison



### Newly designed electric motor

The armature and field coil have been upgraded for remarkable power increase while maintaining the same size with the previous model.

### New circuit protector

The characteristic of the circuit protector was changed to less sensitive while it is surely protecting from motor overload.

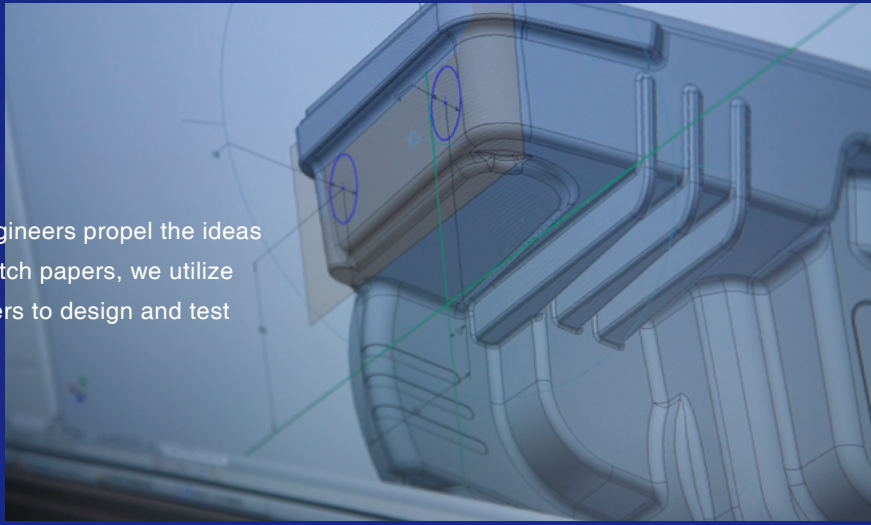
### Reinforced Gears

The gear strength was improved to withstand the high power.



## R&D TEAM: INNOVATIONS

Everything starts from an idea. Discussions among engineers propel the ideas towards implementation. From rough drawings on scratch papers, we utilize 3 dimensional CAD and structural analysis on computers to design and test products.



## PRODUCTION TEAM: HANDMADE

Every complete Shibuya core drilling machine is assembled by our craftsmen. To meet with more clients' demands, we carry out small-volume production in great varieties, rather than go for the automated mass production.





## QUALITY CONTROL TEAM: MADE IN JAPAN

Quality matters. We pay extra attention to the products' quality control. Every complete Shibuya product has a unique serial number for traceability. By informing us the number, we can specify when the machine was fabricated to offer better services. If you know someone who are using Shibuya products nearby, ask them about the reliability of Shibuya products. We are pretty sure that you will get a positive answer.



## DIAMOND TOOLS: OUR OWN

We manufacture diamond tools ourselves to maximize the core drilling performance. The prices of our diamond tools are several times higher than ones made in other Asian countries. However, we have a good market share in Japan because our diamond tools are reputable for reliability from professional concrete cutters. By going through more than 40 years of trial and error making diamond segments, we are making state-of-the-art diamond tools.

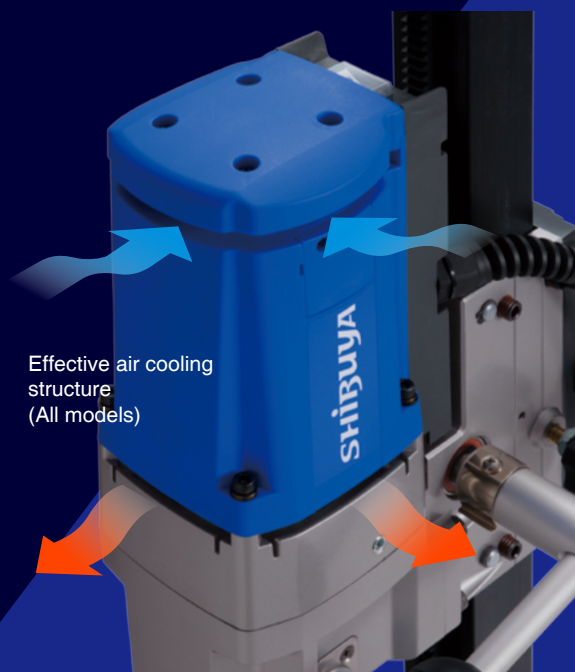


## TESTING: REALITY

Computer simulation is not enough for us. We use our machines and tools by ourselves to find out real tasks and problems of core drilling operations. It leads us to improve the quality of both machines and diamond tools. This task will never be ended.

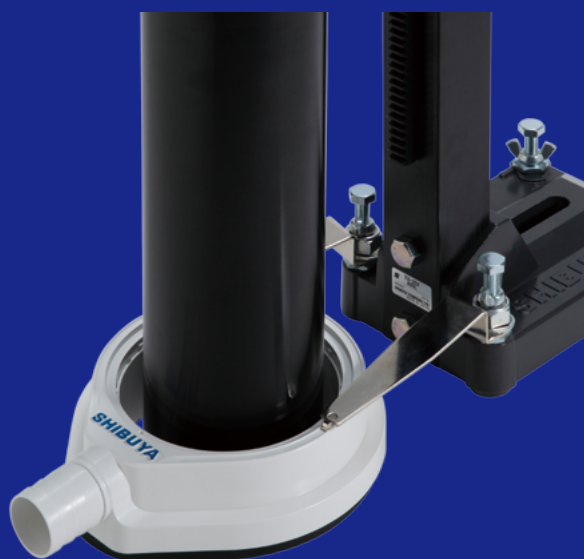


## FEATURES



Effective air cooling structure  
(All models)

The motor ventilation system is designed to prevent water from flowing inside the motor with effective air cooling capacity.



The water ring and storable spring-tension clamps are standard accessory for TS-095/165/255. For the contents of tool kit for each model, please refer to page 18.

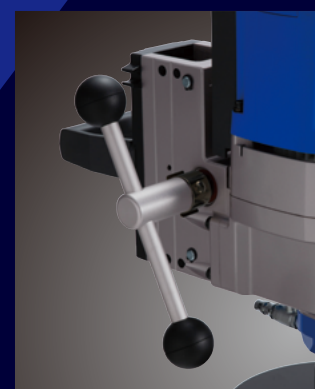
The circuit protector is conveniently located on the drill for motor overload protection.



PRCD cuts off the electricity when electric leakage is detected. (Standard feature for 220-240V machine only.)



The water inlet cock swivels 360° to allow easy water hose connection even in the tightest work places.



Move the feed handle on right or left side with ease to accommodate different working conditions. No tools necessary.



## Applications and Features

- Compact and light yet powerful 1,600 W machine for limited space jobs.
- Multi-position water swivel inlet for convenience.
- Right and left hand feed handle positions.
- Built-in on/off switch with motor overload protection.
- Portable Residual Current Device (P.R.C.D.) automatically shuts off electricity in the event of electric leakage. (220-240 V only)
- Two motor available: H1011 (Normal) / H1012 (for small diameter with higher rev).
- Angle drill stand (45 degree backward) as standard accessory.
- Normal Stand Column: 805 mm (31") with 558 mm (22") stroke.  
Case version Stand Column: 568 mm (22") with 320mm (12") stroke.
- 40 mm (1-5/8") square column.
- Includes a water collector ring.
- Tool kit including wrenches, allen keys, and core removal wedge lasso.
- Optional spindle adaptor available.



Standard AB42 swivel base



Carry case version

# Stand: TS-095(AB42)

# Motor: H1011/H1012

## Maximum Bit Capacity: 120 mm ( 4")

### Specifications

Height	805 mm • 568 mm (Case)
Base Size	146 x 200 mm
Available Stroke	558 mm • 320 mm (Case)
Rated Input	1,600 W
Voltage	AC 110-120 V • 220-240 V, 50/60 Hz
Speed	1
Spindle Revolutions at No Load (rpm)	1,050 (H1011 110-120V) • 1,100 (H1011 220-240V) 1,900 (H1012 110-120V) • 2,000 (H1012 220-240V)
Spindle Revolutions at Rated Load (rpm)	760 (H1011 110-120V) • 740 (H1011 220-240V) 1,350 (H1012 110-120V) • 1,310 (H1012 220-240V)
Max. Applicable Core Bit Diameter	120 mm (H1011) • 60 mm (H1012)
Spindle Thread	G1/2" (BSPP1/2") • A-Rod
Weight excl. plug and cord	9.6 kg (21.2lbs) • 8.9 kg (19.6 lbs) (Case)

Specifications and products appearances are subject to change without prior notice.  
The diamond core bit in the picture is not included in the item.

## Applications and Features

- Ideal machine for small-middle size jobs.
- Multi-position water swivel inlet for convenience.
- Right and left hand feed handle positions.
- Two speed motor.
- Built-in on/off switch with motor overload protection.
- Two motor available: H1521 (Normal) / H1522 (for small diameter with higher rev).
- Portable Residual Current Device (P.R.C.D.) automatically shuts off electricity in the event of electric leakage. (220-240 V only)
- Includes a water collector ring.
- Normal Stand Column: 803 mm (31") with 545 mm (21") stroke.  
AB52 Column: 1011 mm (40") with 715 mm (28") stroke.  
Case Version Column: 793 mm (31") with 497 or 535 mm (20" or 21") stroke. (extension 200 mm column in use)
- 50 mm (2") square column.
- Tool kit including wrenches and allen keys.



AB52 swivel base available as option



Carry case available as option

# Stand: TS-165

# Motor: H1521/H1522

## Maximum Bit Capacity: 180 mm ( 7")

### Specifications

Height	803 mm • 1011 mm (AB52) • 793 mm (Case Ver.)
Base Size	146 x 205 mm
Available Stroke	545 mm • 715 mm (AB52) • 535 mm (Case Ver.) • 497 (AB52 Case Ver.)
Rated Input	1,900 W (100V) • 1,700 W (110-120V) • 2,100W (220-240V)
Voltage	AC 100V • 110-120 V • 220-240 V, 50/60 Hz
Speed	2
Spindle Revolutions at No Load (rpm)	700/1,000 (H1521 100V) • 750/1,150 (H1521 110-120V) 850/1,300 (H1521 220-240V) • 850/1,750 (H1522 220-240V)
Spindle Revolutions at Rated Load (rpm)	490/690 (H1521 100V) • 520/790 (H1521 110-120V) 470/710 (H1521 220-240V) • 470/970 (H1522 220-240V)
Max. Applicable Core Bit Diameter	180 mm
Spindle Thread	UNC 1-1/4" • A-Rod
Weight excl. plug and cord	H1521 w carriage block: 9.4 kg • TS-165(800L): 5.2 kg • TS-165(AB52)(1000L): 7.5 kg TS-165(Case Ver.): 6.8 kg • TS-165(AB52 Case Ver.): 7.3 kg

Specifications and products appearances are subject to change without prior notice.

The diamond core bit in the picture is not included in the item.



## Applications and Features

- Ideal machine for middle size jobs.
- Built-in on/off switch with motor overload protection.
- Multi-position water swivel inlet for convenience.
- Right and left hand feed handle positions.
- Portable Residual Current Device (P.R.C.D.) automatically shuts off electricity in the event of electric leakage. (220-240 V only)
- Includes a water collector ring.
- Normal Stand Column: 803 mm (31") with 493 mm (19") stroke.  
Long Column: 1003 mm (39") with 693 mm (27") stroke.  
AB52 Column: 1011 mm (40") with 680 mm (27") stroke.
- 50 mm (2") square column.
- Tool kit including wrenches and allen keys.



AB52 swivel base available as option

# Stand: TS-255

# Motor: H2021

## Maximum Bit Capacity: 250 mm (10") with 30 mm Spacer

### Specifications

Height	803 mm • 1003 mm • 1011 mm (AB52)
Base Size	158 x 217 mm • 146 x 205 mm (AB52)
Available Stroke	493 mm • 693 mm (1003L) • 680 mm (AB52)
Rated Input	2,700 W (100V) • 2,300 W (110-120V) • 3,450 W (220-240 V)
Voltage	AC 100 V • 110-120 V • 220-240 V, 50/60 Hz
Speed	2
Spindle Revolutions at No Load (rpm)	470/1,050 (100V) • 450/950 (110-120V) 550/1,200 (220-240V)
Spindle Revolutions at Rated Load (rpm)	320/720 (100V) • 310/680 (110-120V) 300/730 (220-240V)
Max. Applicable Core Bit Diameter	250 mm
Spindle Thread	UNC 1 -1/4" • A-Rod
Weight excl. plug and cord	H2021 w carriage block: 12.2 kg • TS-255(800L): 6.6 kg • TS-255(1000L): 7.5 kg • TS-255(AB52): 7.2 kg

Specifications and products appearances are subject to change without prior notice.

The diamond core bit in the picture is not included in the item.

## Applications and Features

- Ideal machine for middle to large size jobs.
- Multi-position water swivel inlet for convenience.
- Right and left hand feed handle positions.
- Built-in on/off switch with motor overload protection.
- Portable Residual Current Device (P.R.C.D.) automatically shuts off electricity in the event of electric leakage. (220-240 V only)
- Normal Stand Column: 1003 mm (39") with 633 mm (25") stroke.  
AB61 Column: 1060 mm (41") with 655 mm (26") stroke.
- 60 mm (2-3/8") square column.
- Tool kit including wrenches and allen keys.



AB61 swivel base available as option

# Stand: TS-405

# Motor: H2221

## Maximum Bit Capacity: 400 mm (16") with 30 mm Spacer

### Specifications

Height	1003 mm • 1060 mm (AB61)
Base Size	176 x 275 mm • 186 x 250 mm (AB61)
Available Stroke	633 mm • 655 mm (AB61)
Rated Input	3,240 W (120 V) • 3,450 W (220-240 V)
Voltage	AC 120 V • 220-240 V, 50/60 Hz
Speed	2
Spindle Revolutions at No Load (rpm)	300 / 700 (120 V) • 350 / 850 (220-240 V)
Spindle Revolutions at Rated Load (rpm)	230 / 550 (120 V) • 190 / 460 (220-240 V)
Max. Applicable Core Bit Diameter	400 mm
Spindle Thread	A-Rod Only
Weight excl. plug and cord	H2221 w carriage block: 16.9 kg • TS-405: 14.8 kg

Specifications and products appearances are subject to change without prior notice.

The diamond core bit in the picture is not included in the item.



## Applications and Features

- Ideal machine which covers all range up to 400 mm core drilling jobs.
- Multi-position water swivel inlet for convenience.
- Right and left hand feed handle positions.
- Built-in on/off switch with motor overload protection.
- Portable Residual Current Device (P.R.C.D.) automatically shuts off electricity in the event of electric leakage. (220-240V only)
- Normal Stand Column: 1003 mm (39") with 633 mm (25") stroke.  
AB61 Column: 1060 mm (41") with 655 mm (26") stroke.
- 60 mm (2-3/8") square column.
- Tool kit including wrenches and allen keys.



AB61 swivel base available as option

# Stand: TS-405

# Motor: H2231

## Maximum Bit Capacity: 400 mm (16") with 30 mm Spacer

## Specifications

Height	1003 mm • 1060 mm (AB61)
Base Size	176 x 275 mm • 186 x 250 mm (AB61)
Available Stroke	633 mm • 655 mm (AB61)
Rated Input	2,750 W (110 V) • 3,450 W (110-120 and 220-240 V)
Voltage	AC 110 V • 110-120 V • 220-240 V, 50/60 Hz
Speed	3
Spindle Revolutions at No Load (rpm)	300 / 700 / 1400 (110-120 V) • 350 / 800 / 1600 (220-240 V)
Spindle Revolutions at Rated Load (rpm)	230 / 550 / 1080 (110-120 V) • 200 / 500 / 950 (220-240 V)
Max. Applicable Core Bit Diameter	400 mm
Spindle Thread	UNC 1 -1/4" • A-Rod
Weight excl. plug and cord	H2231 w carriage block: 17.8 kg • TS-405: 14.8 kg

Specifications and products appearances are subject to change without prior notice.

The diamond core bit in the picture is not included in the item.

## Applications and Features

- Ideal machine for large diameter core drilling jobs.
- Multi-position water swivel inlet for convenience.
- Right and left hand feed handle positions.
- Built-in on/off switch with motor overload protection.
- Portable Residual Current Device (P.R.C.D.) automatically shuts off electricity in the event of electric leakage. (220-240 V only)
- Normal Stand Column: 1106mm (43") with 634 mm (25") stroke.
- 73 mm (2-7/8") square column.
- Positive carriage lock.
- Tool kit including wrenches and allen keys.



1:1 direct gear &  
1:2.4 reduction gear shaft.

Quick release spacer (standard accessory)  
enables easy mounting/dismounting of the  
motor.

# Stand: TS-605

# Motor: H2531

## Maximum Bit Capacity: 600 mm (24") with 130 mm Spacer

## Specifications

Height	1106 mm
Base Size	230 x 400 mm
Available Stroke	634 mm
Rated Input	2,750 W (110 V) • 3,450 W (110-120 V and 220-240 V)
Voltage	AC 110 V • 110-120 V • 220-240 V, 50/60 Hz
Speed	3
Spindle Revolutions at No Load (rpm)	150 / 300 / 600 (110-120 V) • 175 / 350 / 700 (220-240 V)
Spindle Revolutions at Rated Load (rpm)	100 / 200 / 400 (110-120 V) • 105 / 210 / 420 (220-240 V)
Max. Applicable Core Bit Diameter	600 mm
Spindle Thread	UNC 1 -1/4" • A-Rod
Weight excl. plug and cord	H2531 motor: 20.6 kg • TS-605 w carriage block: 42.9 kg

Specifications and products appearances are subject to change without prior notice.

The diamond core bit in the picture is not included in the item.





## Applications and Features

- Compact three-speed gear box with high, medium, and low speed.
- Weigh Only 6.9 Kg (15 lbs).
- D-style handle for ergonomic control.
- Multi-position front handle.
- Built-in on/off switch with motor overload protection.
- Portable Residual Current Device (P.R.C.D.) automatically shuts off electricity in the event of electric leakage.
- Tool kit including a wrench.
- Optional spindle adaptor available.

- Two Spirit Levels
- Variable speed trigger for hand held use



Switches for rig mounted mode

# Hand Held Drill Motor: HH1531 Hand Held Bit Capacity: 60 mm (2.3")



Carry case and tools included.

## Specifications

Rated Input	1,600 W
Voltage	AC 110-120 V • 220-240 V, 50/60 Hz
Speeds	3
Spindle Revolutions at No Load (rpm)	900/2,100/4,150 (110-120V) • 1,000/2,500/4,900 (220-240V)
Spindle Revolutions at Rated Load (rpm)	720/1,800/3,600 (110-120V) • 730/1,800/3,600 (220-240V)
Recommended Core Bit Diameter in Handheld Mode	12 to 60 mm (0.47" to 2.3")
Recommended Core Bit Diameter in Rig Mounted Mode	12 to 180 mm (0.47" to 7")
Spindle Thread	G1/2" (BSPP1/2")
Weight	6.9 kg (15 lbs)

Specifications and products appearances are subject to change without prior notice.

The diamond core bit in the picture is not included in the item.

## Applications and Features

- Ideal machine for the professionals who need both hand held core drill and rig mounted core drill.
- Compact three-speed gear box with high, medium, and low speeds.
- Built-in on/off switch with motor overload protection.
- Portable Residual Current Device (P.R.C.D.) automatically shuts off electricity in the event of electric leakage.
- Normal Stand Column: 803 mm (31") with 545 mm (21") stroke.  
AB52 Column: 1011 mm (40") with 715 mm (28") stroke.
- 50 mm (2") square column.
- Right and left hand feed handle positions.
- 2 way mounting methods:
  - 30 mm Bolt-on Spacer
  - Clamp Ring Spacer
- Tool kit including wrenches and allen keys.
- Optional spindle adaptor available.

Angle Drill Stand AB52,  
Column Length 1000 mm  
with 30 mm Bolt-on Spacer



Fixed Drill Stand, Column Length  
800 mm with Clamp Ring Spacer

# Stand: TS-165

# Motor: HH1531

## Rig Mounted Bit Capacity: 180 mm (7")

### Specifications

Rated Input	1,600 W
Voltage	AC 110-120 V • 220-240 V, 50/60 Hz
Speeds	3
Spindle Revolutions at No Load (rpm)	900/2,100/4,150 (110-120V) • 1,000/2,500/4,900 (220-240V)
Spindle Revolutions at Rated Load (rpm)	720/1,800/3,600 (110-120V) • 730/1,800/3,600 (220-240V)
Recommended Core Bit Diameter in Handheld Mode	12 to 60 mm (0.47" to 2.3")
Recommended Core Bit Diameter in Rig Mounted Mode	12 to 180 mm (0.47" to 7")
Spindle Thread	G1/2" (BSP1/2")
Weight	HH1531 motor: 6.9 kg • TS-165: 8 or 8.5 kg • TS-165(AB52): 10.3 or 10.8 kg
Height	803 mm • 1011 mm (AB52)
Base Size	146 x 205 mm
Available Stroke	545 mm/ • 715 mm (AB52)

Specifications and products appearances are subject to change without prior notice.  
The diamond core bit in the picture is not included in the item.



## Applications and Features

- Feeds the drill motor automatically.
- Detects the load of the drill motor and automatically adjusts the feeding speed.
- The rebar detecting function avoids cutting through a rebar.\*
- Compatible with 2019 new models.
- Mountable on both right and left side of the carriage block.
- Automatically shuts off when the core bit penetrates the working material.

\* The function works when necessary conditions are satisfied.

## Important Note

- This product is NOT CE certified.
- Always keep eyes on the machine during operations. Never leave the machine running alone. In emergency, always stay at the position where the operator can stop the machine immediately.

Setting example  
The motor, the stand, and the core bit are not included in the item.



# Automatic Feeding System: AFS-R

## Specifications

Voltage	AC 100-120V • 220-240V, 50/60 Hz
Rated Input	40 W
Weight	7.0 kg (15.4 lbs)
Dimension	196 (W) x 258 (L) x 268 (H)
Applicable Model	TS-252, TS-255, TS-402, TS-403, TS-405

Specifications and products appearances are subject to change without prior notice.  
The core drilling machine and diamond core bit in the picture is not included in the item.



## Standard tool kits

### TS-095(AB42)

- Allen Key 4 and 5 mm
- Double-End Spanner 13 x 17 mm
- Single-End Spanner 32 and/or 36 mm
- Core Removal Wedge Lasso
- 3/8" Square Washer



### TS-165

- Allen Key 4 and 6 mm
- Double-End Spanner 17 x 19 mm (AB52) or 13 x 17 mm
- Single-End Spanner 32 mm or 36 mm
- Core Removal Wedge Lasso
- 3/8" Square Washer



### TS-255

- Allen Key 4 and 6 mm
- Double-End Spanner 17 x 19 mm (AB52)
- Single-End Spanner 21 mm (Fixed Base) and 36 mm
- Core Removal Wedge Lasso
- 3/8" Square Washer



### TS-405

- Allen Key 4 and 6 mm
- Ratchet Wrench 19 x 21 mm
- Single-End Spanner 36 mm
- Nut Driver 7 mm
- Core Removal Wedge Lasso
- W1/2" Square Washer



### TS-405(AB61)

- Allen Key 4, 6, 8, 10 mm
- Ratchet Wrench 19 x 21 mm
- Ring Wrench 19 x 21 mm
- Single-End Spanner 36 mm
- Nut Driver 7 mm
- Core Removal Wedge Lasso
- W1/2" Square Washer



### TS-605

- Allen Key 5, 6, 8 mm
- Ratchet Wrench 19 x 21 mm
- Double-End Spanner 19 x 21 mm
- Single-End Spanner 24, 36 mm
- Core Removal Wedge Lasso
- W1/2" Square Washer



## Optional Accessories

### Vacuum Pads

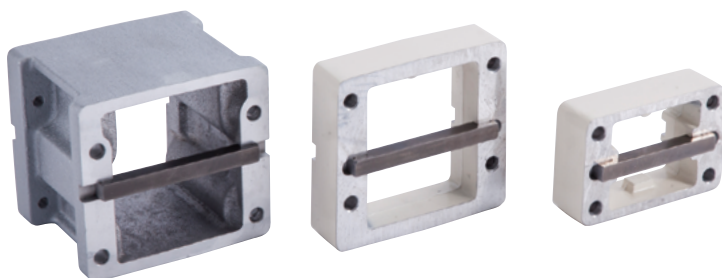
Enables to mount core drill machines to concrete surface without an anchor. Use a vacuum pump together.

- XS: TS-095
- S: TS-095/165
- L: TS-095/165/255
- XL: TS-095/165/255/405



### Caution!

- Never use the vacuum pads for drilling in unstable positions such as on vertical walls and on the ceiling.
- Use a vacuum pump which suction power is enough to maintain vacuum degree of -0.08 to -0.1MPa (-0.8 to -1bar, -60 to -75cmHg, or -23 to -29inHg).



### Spacers

Enables installing larger diameter core bits by attaching a spacer between a drill motor and a carriage block.

- 30 mm for TS-255
- 30, 60, and 100 mm for TS-405

### Water tank

For the working sites where there is no water line.

- Water capacity: 14 liters
- High quality stainless steel
- Manual pressure type



### Vacuum pump

(This product is NOT CE certified.)

Best machining with SHIBUYA vacuum pads.  
2 liters reserve tank equipped.

Specification:

- AC 100-120V 2A 50/60Hz
- Maximum vacuum degree: -0.09 MPa
- Pumping Speed: 40 - 45 L/min
- Size: W202 x L308 x H317 mm
- Weight: 13.1 kg



## Optional Accessories

### Water Collection Rings

- Avoids splash of concrete slurry.
- Available size:
  - 110 / 160 / 180 / 200 mm
  - 4 / 6 / 8 / 10 / 12 / 14 / 16 / 18 / 20 / 24"



### Water Collection Rings

- WCR-130 and 180 stick to desired position when vacuum cleaner is used.
- Standard accessory for TS-095, TS-165, and TS-255.



### Water Collection Ring Fixtures

Fixes water collection rings to the material to be drilled.

- 4" to 8" for TS-255 50 mm column
- 4" to 10" for TS-255 50 mm column
- 4" to 8" for TS-405 60 mm column
- 10" to 12" for TS-405 60 mm column
- 14" to 18" for TS-405 60 mm column



A water collection ring and a fixture is used.



## 1 Piece Wet Core Bit: YS-1



### Specifications

Outer Diameter	Max Drilling Depth	Spindle Thread
28 mm	370 mm	A-Rod or UNC 1 -1/4"
32 mm	370 mm	A-Rod or UNC 1 -1/4"
40 mm	370 mm	A-Rod or UNC 1 -1/4"
52 mm	370 mm	A-Rod or UNC 1 -1/4"
65 mm	370 mm	A-Rod or UNC 1 -1/4"
70 mm	370 mm	A-Rod or UNC 1 -1/4"
75 mm	370 mm	A-Rod or UNC 1 -1/4"
80 mm	370 mm	A-Rod or UNC 1 -1/4"
90 mm	370 mm	A-Rod or UNC 1 -1/4"
100 mm	370 mm	A-Rod or UNC 1 -1/4"
110 mm	370 mm	A-Rod or UNC 1 -1/4"

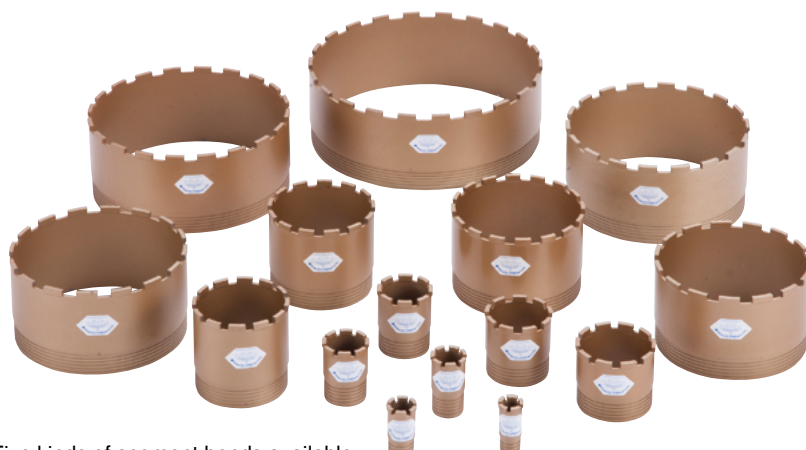
Outer Diameter	Max Drilling Depth	Spindle Thread
120 mm	370 mm	A-Rod or UNC 1 -1/4"
130 mm	370 mm	A-Rod or UNC 1 -1/4"
150 mm	370 mm	A-Rod or UNC 1 -1/4"
160 mm	370 mm	A-Rod or UNC 1 -1/4"
180 mm	370 mm	A-Rod or UNC 1 -1/4"
200 mm	370 mm	A-Rod or UNC 1 -1/4"
210 mm	350 mm	A-Rod or UNC 1 -1/4"
230 mm	350 mm	A-Rod or UNC 1 -1/4"
250 mm	350 mm	A-Rod or UNC 1 -1/4"
260 mm	350 mm	A-Rod or UNC 1 -1/4"
310 mm	350 mm	A-Rod or UNC 1 -1/4"

Three kinds of segment bonds available:

- YS-1: Balanced Type
- YS-1BN: Faster Cutting Speed / Shorter Life
- YS-1H: Longer Life / Slower Cutting Speed

For outer diameter 45, 48, 52, 65, 75, 80, 90, 110, 130, 160, 180, and 210 mm, max drilling depth: 420 mm version available.

## 3 Piece Wet Core Bit: SSS



Five kinds of segment bonds available:

2H      H      HB      B      2B  
Hardest      Medium      Softest

### Specifications

Outer Diameter	Effective Drilling Depth
1"	295 mm
1-1/4"	295 mm
1-1/2"	285 mm
2"	285 mm
2-1/2"	280 mm
3"	280 mm
3-1/2"	280 mm
4"	250 mm
5"	250 mm
6"	250 mm
7"	250 mm
8"	250 mm
9"	250 mm
10"	250 mm
11"	250 mm
12"	250 mm



### Specifications

Outer Diameter	Effective Drilling Depth
1"	34 mm
1-1/4"	34 mm
1-1/2"	35 mm
2"	35 mm
2-1/2"	40 mm
3"	40 mm
3-1/2"	40 mm
4"	70 mm
5"	70 mm
6"	70 mm
7"	70 mm
8"	70 mm
9"	70 mm
10"	70 mm
11"	70 mm
12"	70 mm



### Specifications

Outer Diameter	Effective Drilling Depth	Spindle Thread
1"	0 mm	A-Rod or UNC 1 - 1/4"
1-1/4"	0 mm	A-Rod or UNC 1 - 1/4"
1-1/2"	0 mm	A-Rod or UNC 1 - 1/4"
2"	42 mm	A-Rod or UNC 1 - 1/4"
2-1/2"	42 mm	A-Rod or UNC 1 - 1/4"
3"	42 mm	A-Rod or UNC 1 - 1/4"
3-1/2"	42 mm	A-Rod or UNC 1 - 1/4"
4"	42 mm	A-Rod or UNC 1 - 1/4"
5"	42 mm	A-Rod or UNC 1 - 1/4"
6"	42 mm	A-Rod or UNC 1 - 1/4"
7"	42 mm	A-Rod or UNC 1 - 1/4"
8"	42 mm	A-Rod or UNC 1 - 1/4"
9"	42 mm	A-Rod or UNC 1 - 1/4"
10"	42 mm	A-Rod or UNC 1 - 1/4"
11"	42 mm	A-Rod or UNC 1 - 1/4"
12"	42 mm	A-Rod or UNC 1 - 1/4"

## Large Wet Core Bit: D U S L



### Specifications

Outer Diameter	Max Drilling Depth	Spindle Thread
350 mm	500 mm	A-Rod or UNC 1 -1/4"
400 mm	500 mm	A-Rod or UNC 1 -1/4"
450 mm	500 mm	A-Rod or UNC 1 -1/4"
500 mm	500 mm	A-Rod or UNC 1 -1/4"
600 mm	500 mm	A-Rod or UNC 1 -1/4"





*SHIBUYA*

[www.shibuya-group.co.jp/en](http://www.shibuya-group.co.jp/en)



**SHIBUYA COMPANY, LTD.**

5-86 Mokuzaiko-kita, Hatsukaichi, Hiroshima 738-0021 JAPAN

Copyright © 2020 Shibuya Company, Ltd. All rights reserved. Shibuya and other product and feature marks are trademarks of Shibuya Company, Ltd.  
The data contained in this brochure was current as of the date of publication. Specifications and products appearances are subject to change without prior notice.  
All values on this brochure represent the results of testing by Shibuya or test organizations. On-site testing is necessary to determine performance at any specific sites because of variation in working materials.